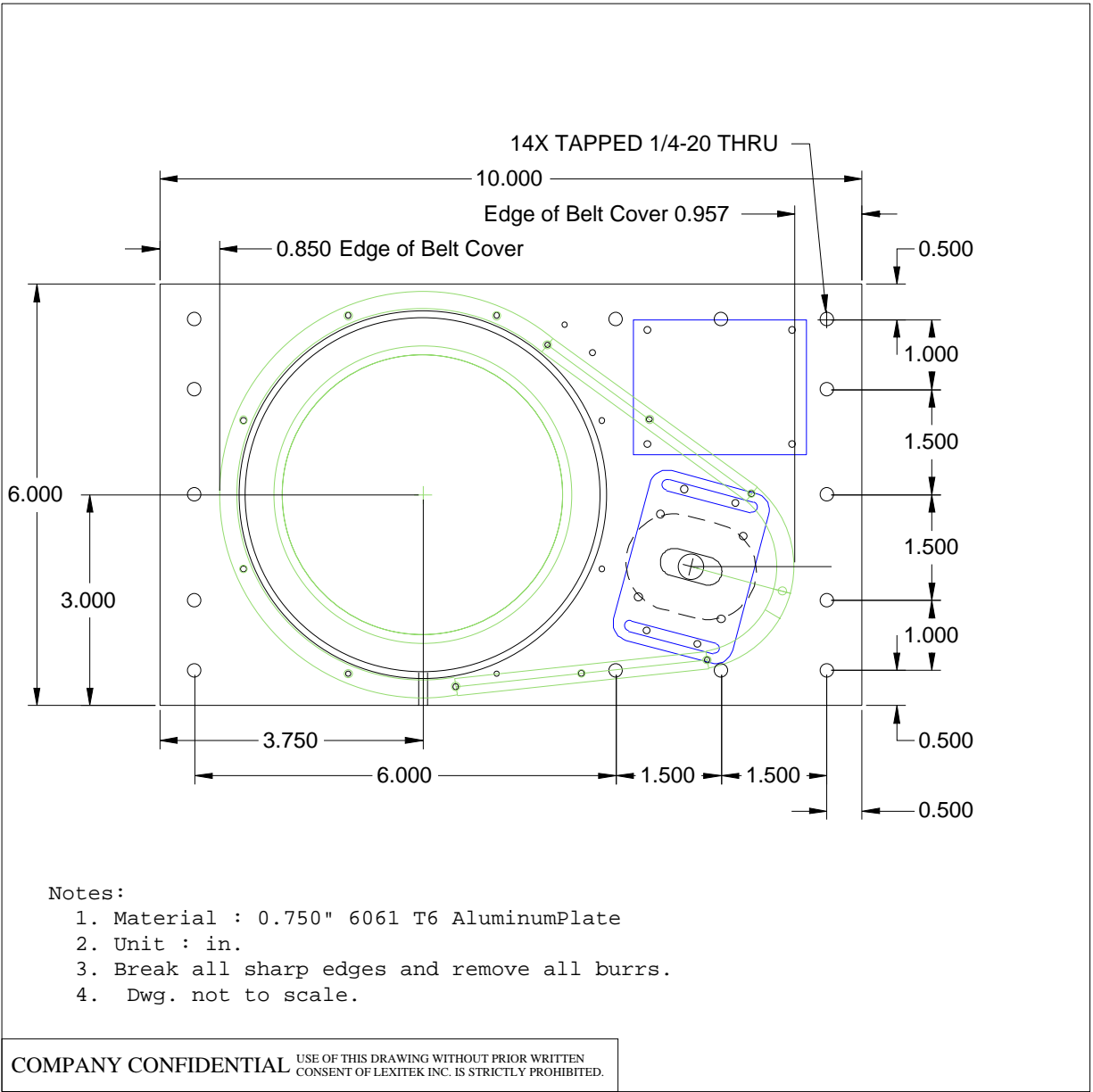


The chain guard, shown in green, projects 0.45" below the bottom of the aluminum baseplate. The motor driver (upper right blue rectangle) and the motor (lower right rounded blue rectangle) are mounted to the top surface of the plate. The motor driver, , which can be mounted elsewhere, is 0.85" high. The motor is 0.36" high. The encoder adds 0.69" of height. The optical home switch, not shown on this drawing, projects 0.64" above the baseplate.

LS-100 stages with an intermediate speed drive have a 0.25" motor mount with slightly larger footprint than the 0.36" high motor shown on the drawing and a 1.34" high motor.



The belt guard, shown in green, projects 0.75" below the bottom of the aluminum baseplate. The motor driver (upper right blue rectangle) and the motor mount (lower right rounded blue rectangle) are mounted to the top surface of the plate. The motor driver, which can be mounted elsewhere, is 0.85" high. The motor mount is 0.25" high. The motor is 1.89" high. The encoder adds 0.69" of height.